

MICROJET HRP 1"

The Little David® **MicroJet HRP 1"** is a reliable, low cost ink jet printhead capable of printing up to 10 lines of data including alphanumerics, logos and UPC-A bar codes onto porous or non-porous surfaces.

It offers highly reliable thermal jet technology, high-resolution printing, easy-to-change ink cartridges, and a wealth of industrial-grade performance features. In short, it's the best value for many marking/coding applications.

DESIGN AND PERFORMANCE FEATURES:

- Prints characters 1/10", 1/4", 1/2" or 1" tall
- Print up to 10 lines of data including alphanumerics, logos, and UPC-A bar codes
- Enclosed industrial printhead
- Can be driven by ES Controller, handheld, PC, or direct serial interface
- Hinged cover provides easy access to ink cartridges
- Easy snap-in/snap-out method for changing ink
- Stainless steel faceplate with built-in photo sensors to detect product speed and direction
- 300 dpi vertical and horizontal resolution
- Print speeds up to 200 feet/minute
- Channel purge at the printhead
- Industrial DB-9 serial connection
- Loveshaw's Smart Level Ink Detection System provides user with "ink low" and "ink out" Loveshaw cartridge status

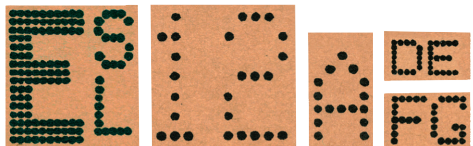


VERSAJET LC

- The Little David® **VersaJet LC** offers:
- Flexible large character ink jet printer
 - Stainless steel for durability
 - 1 to 6 printheads
 - Prints up to 6 lines on 1 or 2 sides of a box
 - Print on 1 or 2 production lines with only one controller
 - UL Listed
 - 90 day warranty and a 2 year valve warranty

SPECIFICATIONS:

- Power Requirements: 110 VAC, 60 Hz, 3 Amps max. (switch selectable)
Other voltages 220 VAC, 60 Hz, 1.5 Amps maximum (switch selectable)
- Operating Speed: Up to 100' per minute (30.5 m/min), high speed available
- Character Font: 7 x 5 dot matrix, 7 x 10 dot matrix in bold w/ standard printhead
Optional 16-dot high character printhead
- Character Height: 6 standard sizes: 3/8" (9.5mm), 1/2" (12.7mm), 7/8" (20.6mm), 1-1/4" (31.8mm), 1-1/2" (38.1mm) and 2" (50.8mm)
Optional high character printhead: 15/16" (23.8mm), 1-1/4" (31.8mm), 2-7/32" (56.4mm)
- Character Set: full ASCII 64 character upper case set. Up to 39 characters per line.
- Language Options: English, French, Spanish, Italian, German, Dutch or Portuguese
- Print Direction: forward, reverse or upside down
- Memory: 15k of variable length messages



LITTLE DAVID®



JET PRINTERS

HIGH PERFORMANCE SOLUTIONS FOR THE REAL WORLD



DOWNLOAD
OUR NEW APP



Download this app for information, videos and specifications for our popular Little David brand of products.



DISTRIBUTED BY:

LOVESHAW

2206 Easton Turnpike
P.O. Box 83, South Canaan, PA 18459
Tel: (570) 937-4921 Fax: (570) 937-3229
Toll Free: (800) 572-3434

LOVESHAW Europe

Unit 1 Newton Park
West Portway Industrial Estate
Andover, Hampshire, SP10 3SH
sales@loveshaw-europe.co.uk
Tel: +44 (0)1264 357 511
Fax: +44 (0) 1264 355 964

Printed in America

© 2015 LOVESHAW

www.youtube.com/loveshaw
<http://twitter.com/loveshaw>



LITTLE DAVID® DELIVERS HIGH-PERFORMANCE PACKAGING EQUIPMENT.

www.loveshaw.com

MICROJET HRP

The Little David® **MicroJet HRP** is an industrial thermal ink jet printer designed for one and two line marking/coding applications. Utilizing HP® technology, the MicroJet HRP offers superior ease of operation and quality of print combined with the industrial durability you expect from Little David®.



PERFORMANCE AND DESIGN:

Complete System- Printer is ready to run right out of the box. The unit comes with mounting bracketry, necessary cables and software.

Industrial Design- Stainless steel faceplate and sealed printhead ensure durability in the most demanding environments.

Variable Character Heights:
Prints a one line message in .45" characters, two lines of .22", or 3 lines at .10".

Quick/Easy Maintenance:
Easy snap-in/snap-out method for changing ink - includes channel purge at the printhead.

FEATURES:

- Prints characters up to .45" tall
- Prints multiple lines
- Prints UPC-A bar codes and alphanumerics
- Sealed industrial printhead
- Hinged cover provides easy access to ink cartridge
- Easy snap-in/snap-out method for changing ink
- Stainless steel faceplate with built-in photo sensors to detect product speed and direction
- Channel purge at the printhead
- Industrial DB-9 serial connection
- In/out port for daisy chaining

PRINTHEADS:

Type: HP Thermal Ink Jet
Print Speed: Up to 200 fpm (up to 61 mps)
Orientation: Side or top-down printing
Product Sensing: Integrated photoeyes
Print Resolution: 300 dpi vertical resolution
Ink Throw Distance: Up to 1/4" (6.35 mm)
Communication Interface: RS232C

OPTIONAL HAND HELD TERMINAL:

Enclosures: High impact ABS plastic
User Interface: Graphic User Interface (GUI),
QWERTY style keyboard
Communication Ports: RS232C, USB, Ethernet.
Supports up to 8 print cartridges per COM port
Auto Codes: Time, Date, Sell By, Julian Date, Rollover
Time, Count, Shift, User Defined Fields
Memory:128 MB flash memory

Hand-Held II



INK SUPPLY:

Printer will only function properly while using Genuine Little David Ink
Available in:
Black (Porous or Non-Porous), and in Bulk.

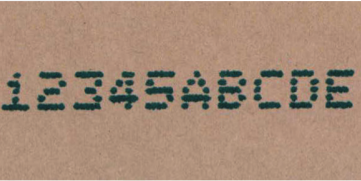
LD MICROJET



- Better message control**
- Crisp clean print**
- Great for higher speed lines and for smaller boxes**
- Throw distance increased, 250ft/min**

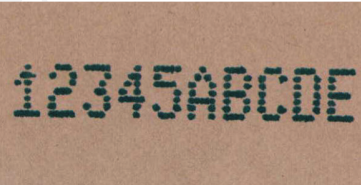
MicroJet I

- Prints one line of 5 X 5 dot matrix character
- 11/32" (8.7mm) character height
- Self-contained non contact coding system
- High speed valves (5) standard
- Messages Save Area = 255 (39 fixed characters per line)



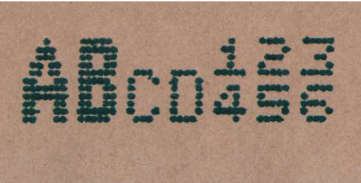
MicroJet I Plus

- Prints one line of 7 X 5 dot matrix character
- Choose from one of following nozzle plate sizes:
3/8" (9.5mm) - Prints one line of 3/8" character height or
1/2" (12.7mm) - Prints one line of 1/2" character height or
7/8" (22.2mm) - Prints one line of 7/8" character height
- Self-contained non contact coding system
- High speed valves (7) standard
- Messages Save Areas = 255 (39 fixed characters per line)



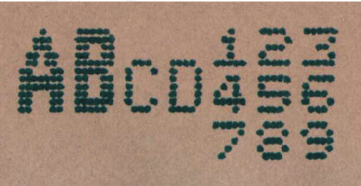
MicroJet II

- Prints multiple lines and character heights:
One or two lines of 5 X 5 dot matrix at 11/32" (8.7mm) character height or
One line of 7 X 5 dot matrix at 1/2" (12.7mm) character height or
One line of 11 X 7 dot matrix at 13/16" (20.6mm) character height or
any combination in a message
- Self-contained non contact coding system
- High speed valves (11) standard
- Messages Save Areas = 149 (39 fixed characters per line)



MicroJet III

- Prints multiple lines and character heights:
One, two or three lines of 5 X 5 dot matrix at 11/32" (8.7mm) character height or
One line of 7 X 5 dot matrix at 1/2" (12.7mm) character height or
One line of 11 X 7 dot matrix at 13/16" (20.6mm) character height or
any combination in a message
- Self-contained non contact coding system
- High speed valves (16) standard
- Messages Save Areas = 100 (39 fixed characters per line)



MicroJet III HC

- Prints multiple lines and character heights
- Choose from one of following nozzle plate sizes:
15/16" (23.8mm) - Prints one line of 15/16" character height and/or
one or two lines of 7 X 5 dot matrix at 3/8" (9.5mm) character height
1-1/4" (31.8mm) - Prints one line of 1-1/4" character height and/or
one or two lines of 7 X 5 dot matrix at 1/2" (12.7mm) character height
2-7/32" (56.4mm) - Prints one line of 2-7/32" character height
one or two lines of 7 X 5 dot matrix at 7/8" (22.2mm) character height
- Self-contained non contact coding system
- High speed valves (16) standard
- Messages Save Areas = 149 (39 fixed characters per line)

